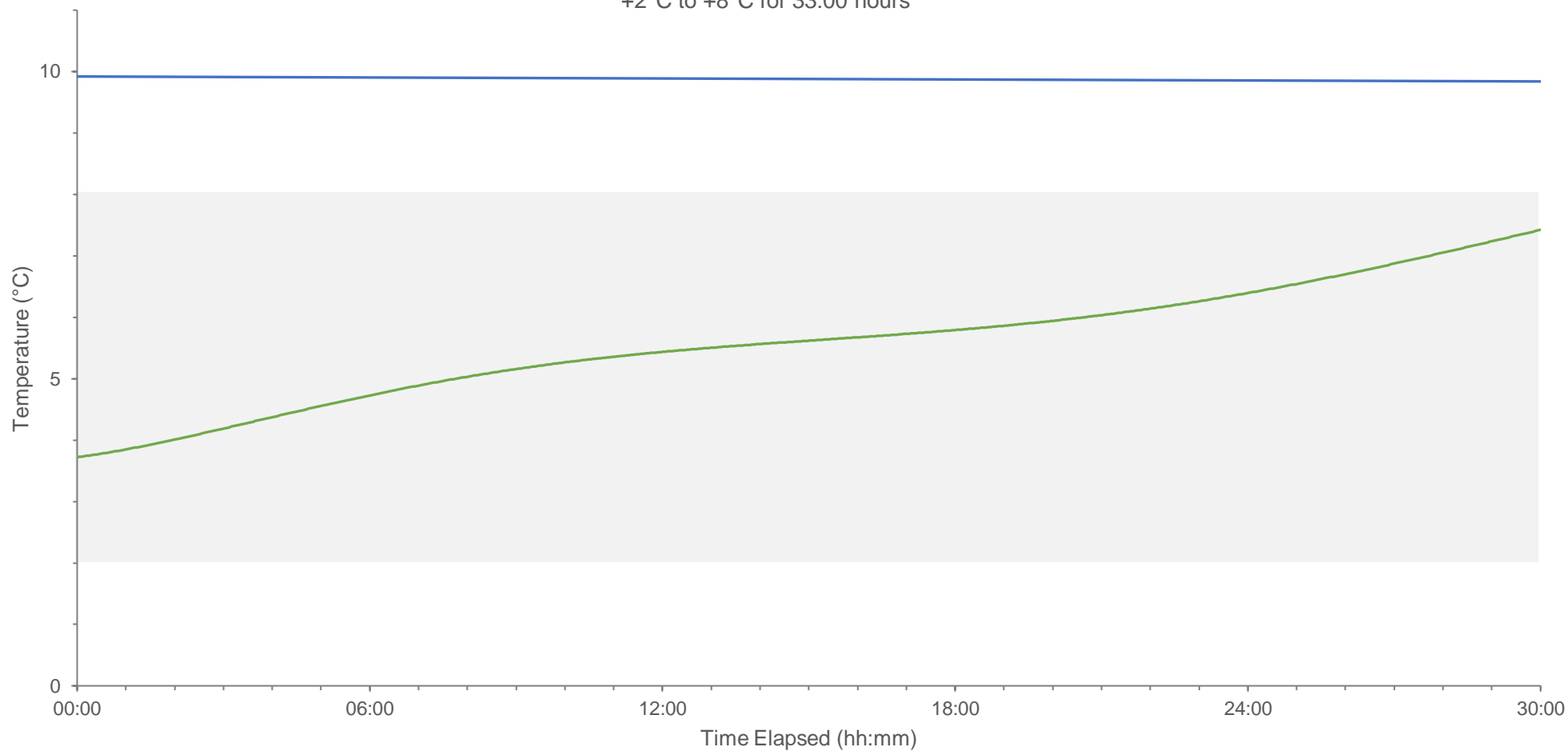


# EnviroCool™

+10°C Constant | 1 x 500g Ice Pack | Test conducted without food products

+2°C to +8°C for 33:00 hours



Hydropac®  
Insulated Shipping Systems

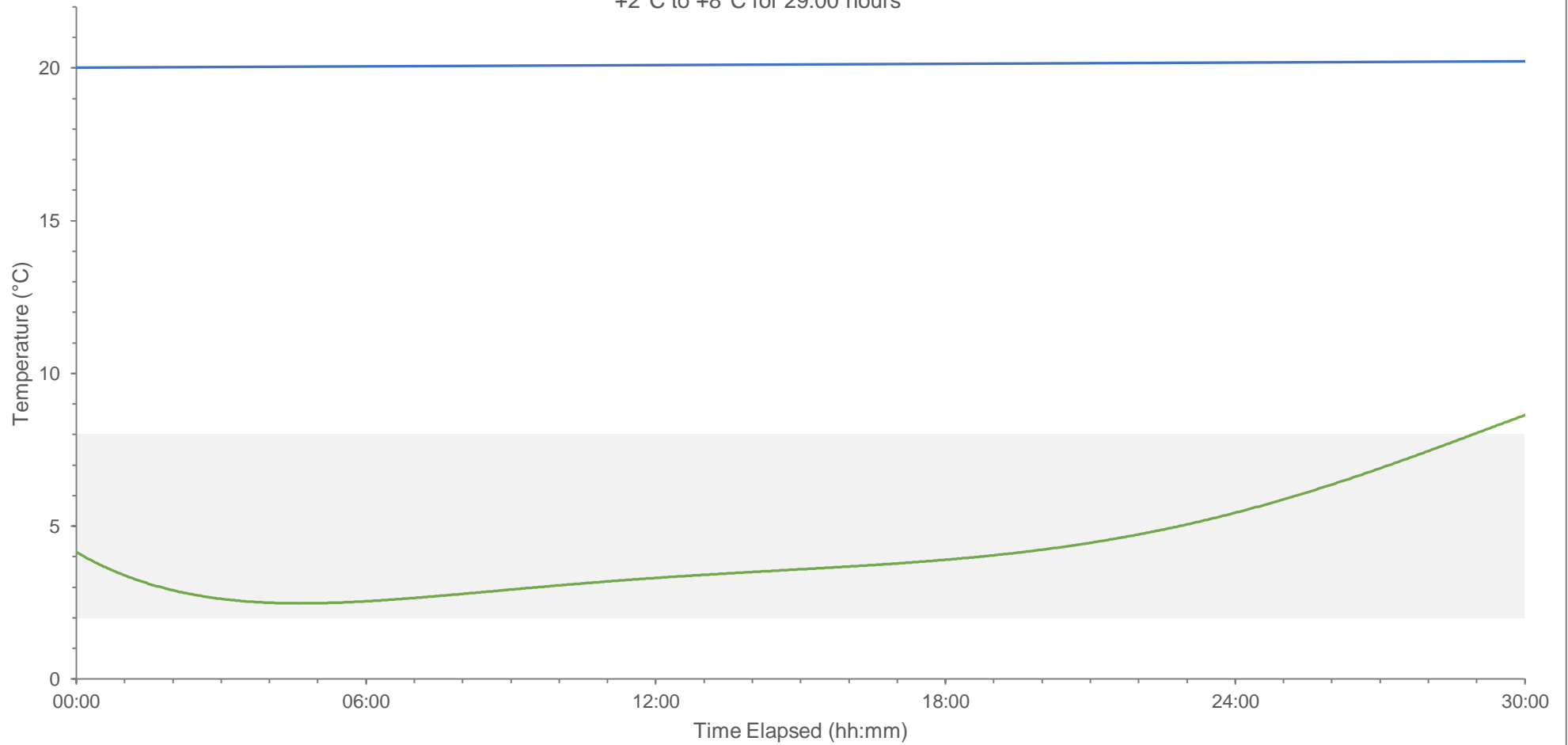
Freshpac®  
Insulated Food Shipping Systems

Pharmapac®  
Insulated Pharmaceutical Shipping Systems

# EnviroCool™

+20°C Constant | 5 x 500g Ice Packs | Test conducted without food products

+2°C to +8°C for 29:00 hours



Hydropac®  
Insulated Shipping Systems

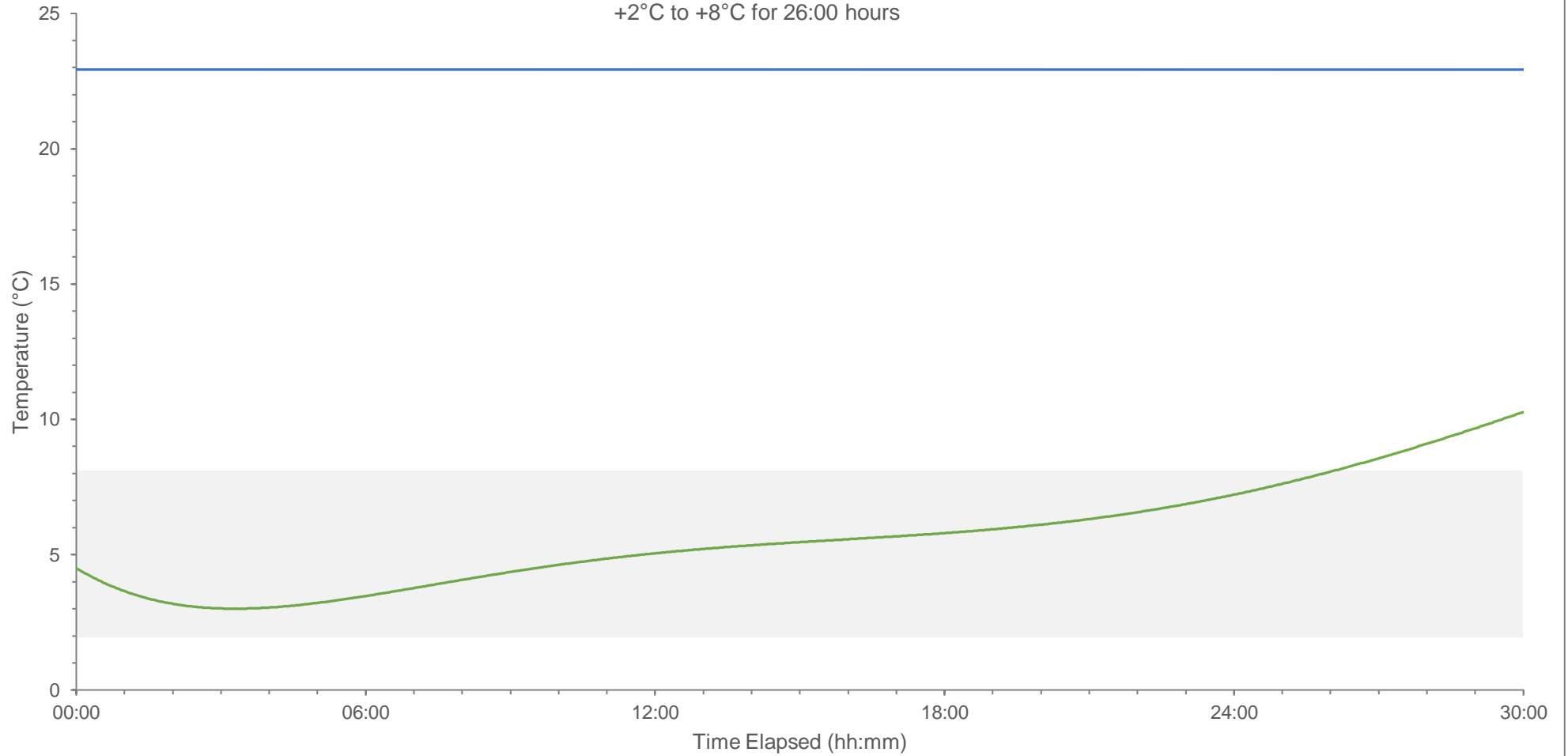
Freshpac®  
Insulated Food Shipping Systems

Pharmapac®  
Insulated Pharmaceutical Shipping Systems

# EnviroCool™

+23°C Constant | 6 x 500g Ice Packs | Test conducted without food products

+2°C to +8°C for 26:00 hours



Hydropac®  
Insulated Shipping Systems

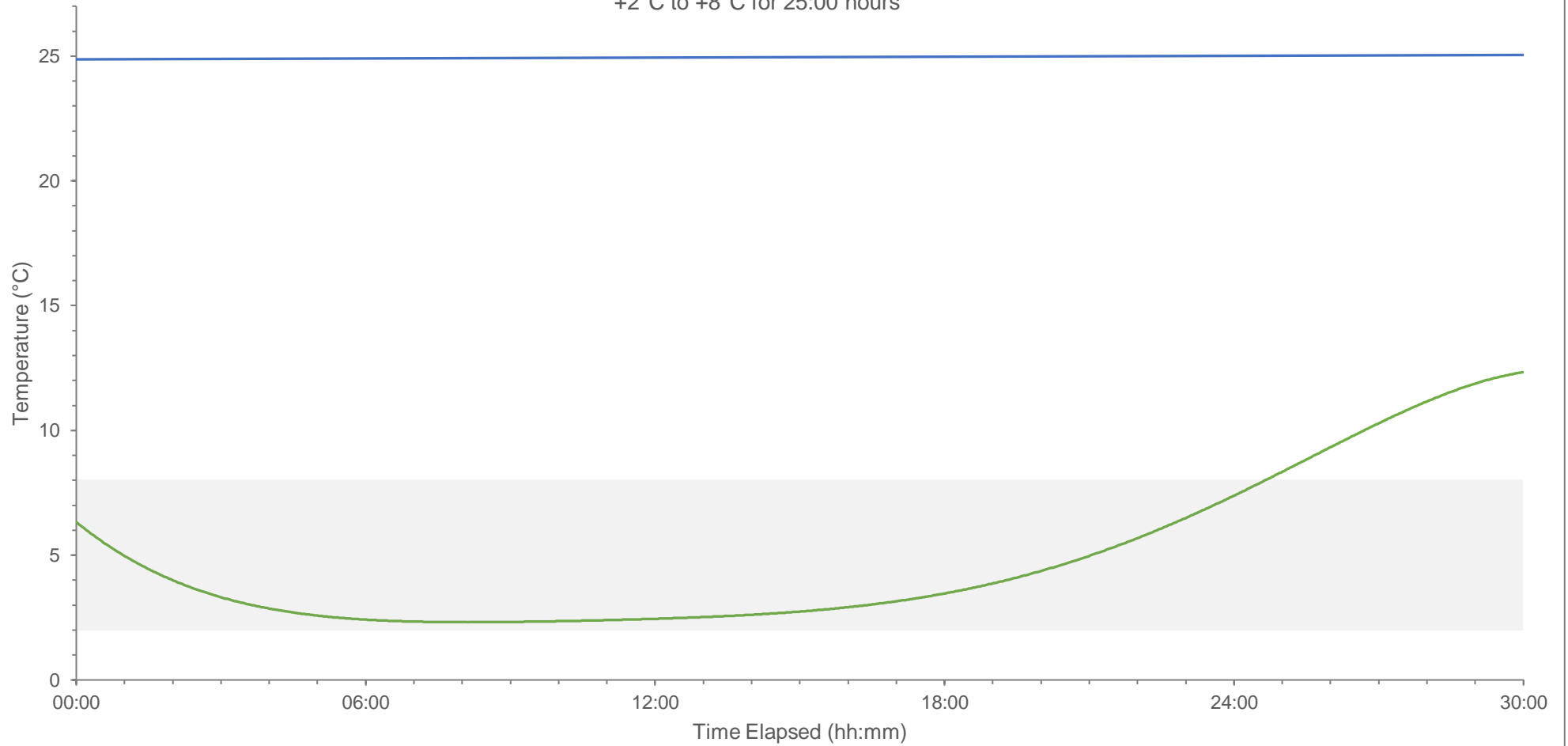
Freshpac®  
Insulated Food Shipping Systems

Pharmapac®  
Insulated Pharmaceutical Shipping Systems

# EnviroCool™

+25°C Constant | 6 x 500g Ice Packs | Test conducted without food products

+2°C to +8°C for 25:00 hours



Hydropac<sup>®</sup>  
Insulated Shipping Systems

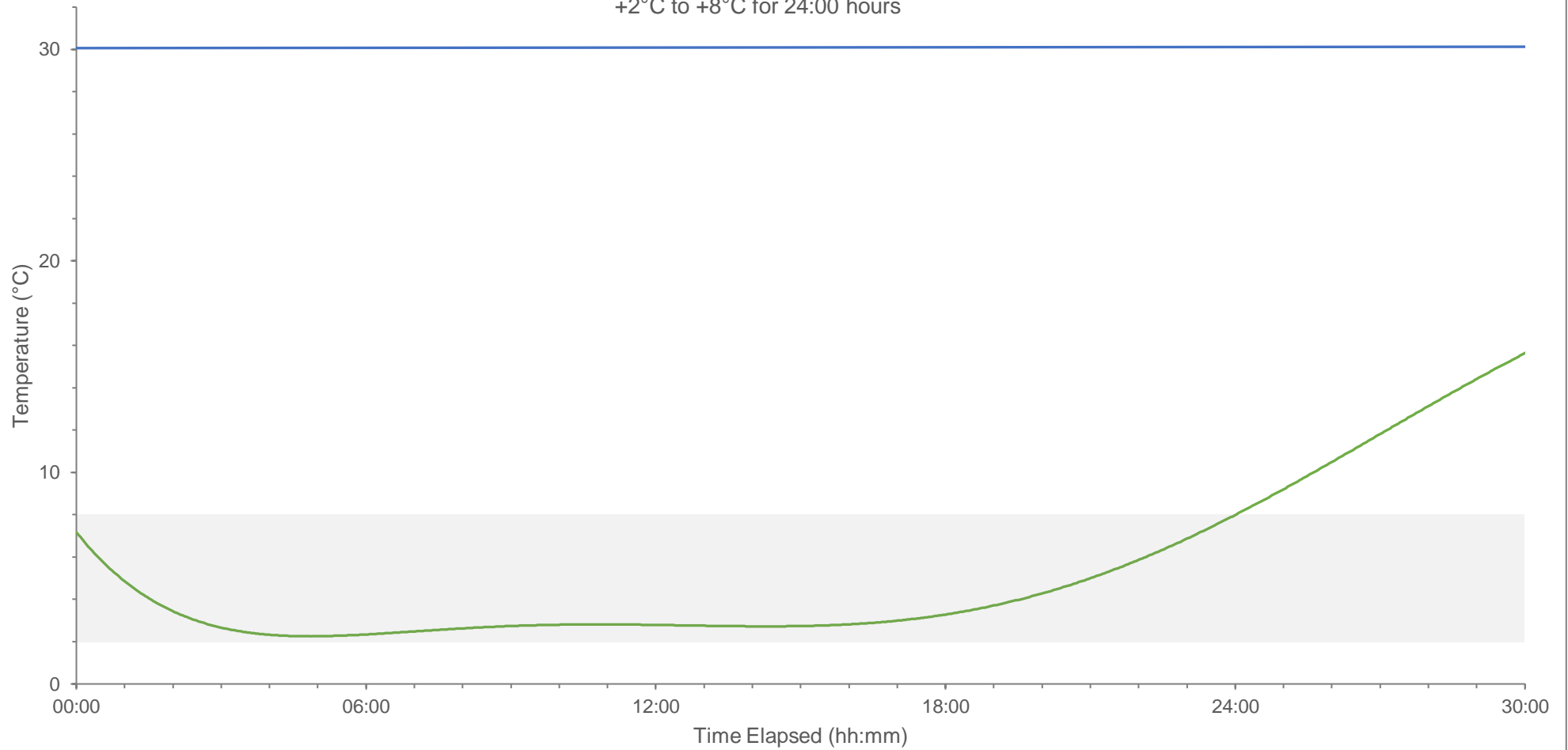
Freshpac<sup>®</sup>  
Insulated Food Shipping Systems

Pharmapac<sup>®</sup>  
Insulated Pharmaceutical Shipping Systems

# EnviroCool™

+30°C Constant | 8 x 500g Ice Packs | Test conducted without food products

+2°C to +8°C for 24:00 hours



Hydropac<sup>®</sup>  
Insulated Shipping Systems

Freshpac<sup>®</sup>  
Insulated Food Shipping Systems

Pharmapac<sup>®</sup>  
Insulated Pharmaceutical Shipping Systems