

Pharmapac - Genesis™

“Simplicity Engineered Through Innovation, Not Imitation”

Genesis 5 – 9.8 to 14.4 L

72+ Hours Minimum (Summer)



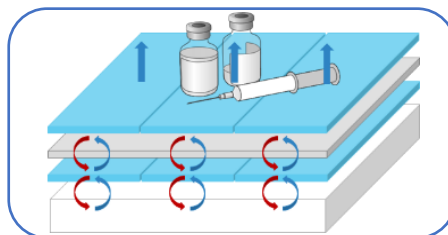
Pharmapac-Genesis™ is Hydropac's first validated offering within the Pharmapac brand, designed as a cost effective, single-use system to protect refrigerated payloads (2 – 8°C) for at least two days during transit.

Consisting of a heavy-duty recyclable polystyrene (EPS) container, robust ice packs and an innovative filter pack designed to regulate internal temperatures, Hydropac have been able to achieve superior year-round thermal protection minus the complexity and cost.

Simple, affordable, effective.

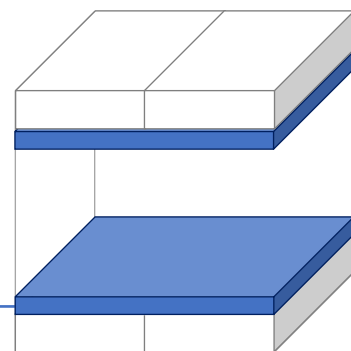
The science behind the Pharmapac-Genesis™ Filter Pack

Two layers of encapsulated water separated by an insulative panel

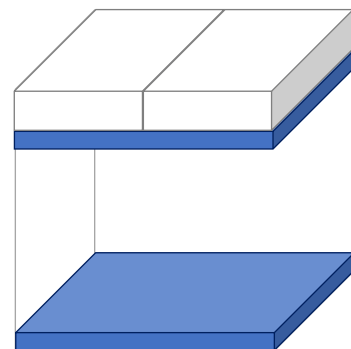


- First layer of water absorbs the sub-zero thermal energy from the ice pack
- Insulative panel controls the rate of cooling of the second layer of water
- Controlled heat exchange ensure payload maintains safe temperatures during transit

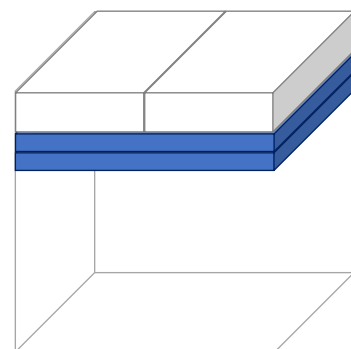
System ID	Season	Duration (Hours)	Payload Dims. (mm) L x W x H	Litres	External Dims. (mm) L x W x H	Tare Weight (kg)
Pharmapac-Genesis™ 1 2 - 8°C	Summer	52	152 x 152 x 32	0.75	255 x 255 x 255	1.70
	Spring/Autumn	75	152 x 152 x 72	1.66		1.25
	Winter	120+	152 x 152 x 72	1.66		1.25
Pharmapac-Genesis™ 3 2 - 8°C	Summer	58	245 x 205 x 75	3.77	355 x 305 x 300	3.30
	Spring/Autumn	83	245 x 205 x 100	5.02		2.25
	Winter	120+	245 x 205 x 100	5.02		2.25
Pharmapac-Genesis™ 4 2 - 8°C	Summer	78	205 x 205 x 75	3.15	345 x 345 x 355	3.25
	Spring/Autumn	106	205 x 205 x 120	5.04		2.30
	Winter	120+	205 x 205 x 120	5.04		2.30
Pharmapac-Genesis™ 4D 2 - 8°C	Summer	74	250 x 250 x 110	6.88	345 x 345 x 355	5.00
	Spring/Autumn	125	250 x 250 x 130	8.13		3.80
	Winter	120+	250 x 250 x 130	8.13		3.80
Pharmapac-Genesis™ 5 2 - 8°C	Summer	94	305 x 305 x 105	9.77	460 x 460 x 390	6.55
	Spring/Autumn	108	305 x 305 x 155	14.42		4.40
	Winter	120+	305 x 305 x 155	14.42		4.40
Pharmapac-Genesis™ 6 2 - 8°C	Summer	102	435 x 380 x 145	23.97	565 x 500 x 420	10.20
	Spring/Autumn	120+	435 x 380 x 180	29.75		7.20
	Winter	120+	435 x 380 x 180	29.75		7.20



Summer



Spring/Autumn



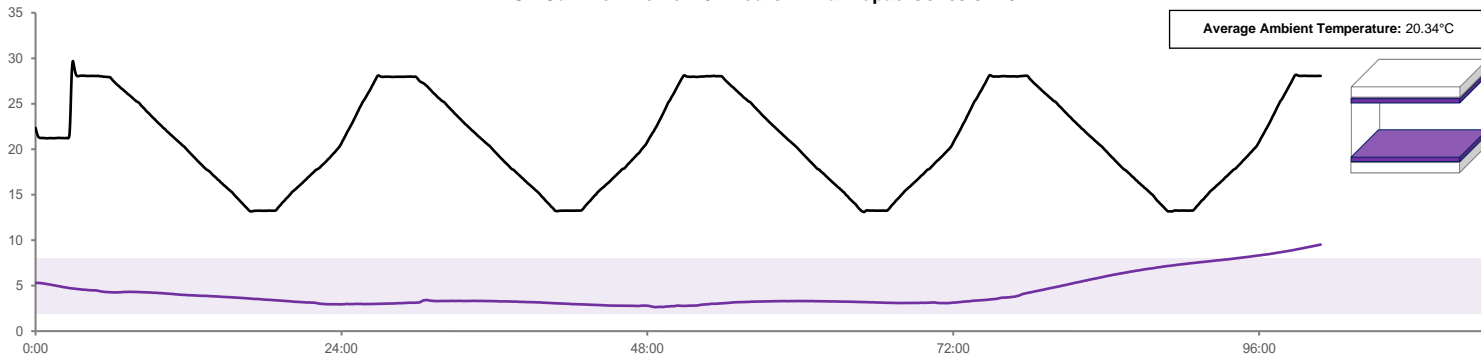
Winter



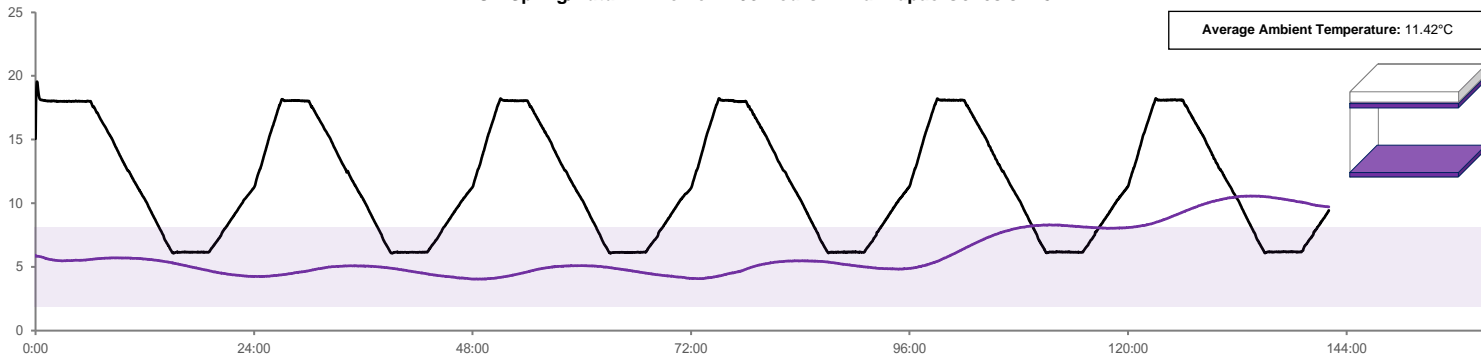
Another innovation by



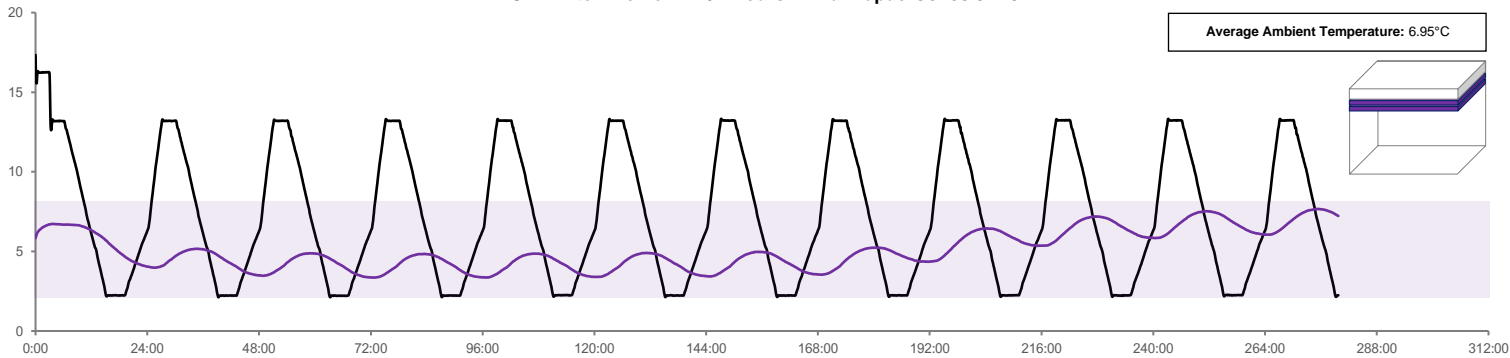
UK Summer Profile – 94 Hours – Pharmapac-Genesis™ 5



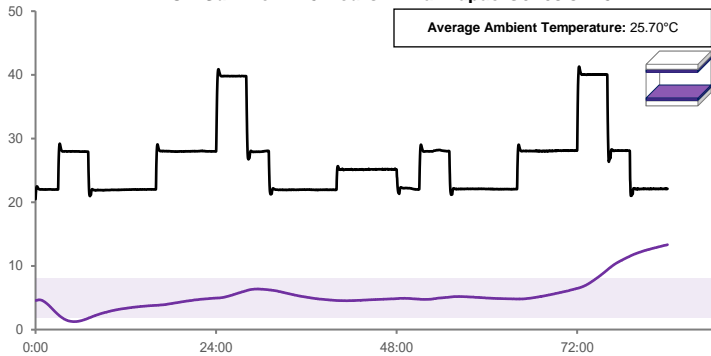
UK Spring/Autumn Profile – 108 Hours – Pharmapac-Genesis™ 5



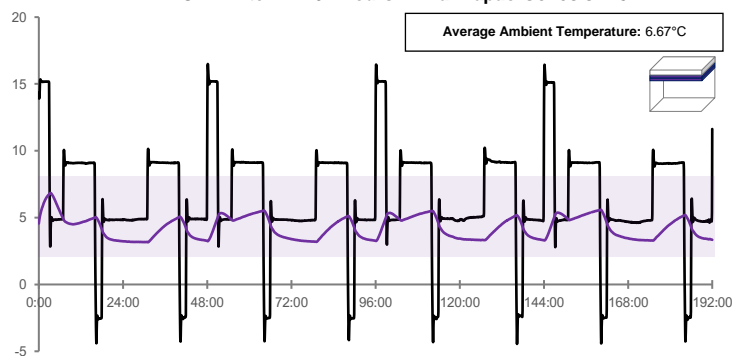
UK Winter Profile – 120+ Hours – Pharmapac-Genesis™ 5



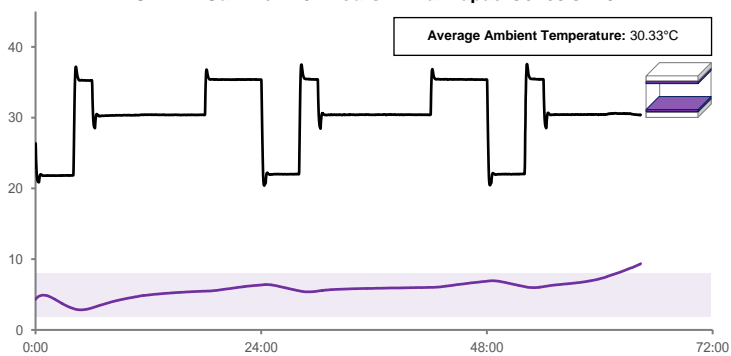
ANFOR Summer – 75 Hours – Pharmapac-Genesis™ 5



ANFOR Winter – 120+ Hours – Pharmapac-Genesis™ 5



ISTA 7D Summer – 62 Hours – Pharmapac-Genesis™ 5



For more information, please contact:

sales@hydropac.co.uk

T: +44 (0) 1494 530 182

www.hydropac.co.uk

Hydropac Limited, Unit 1 Network 4, Lincoln Road, High Wycombe, Buckinghamshire, HP12 3RF

Another innovation by

Hydropac Innovative Shipping Systems